



Charmaine Winter
074 495 8888
charmaine@threepercent.com

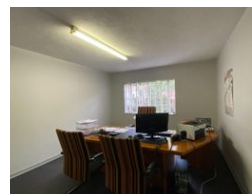
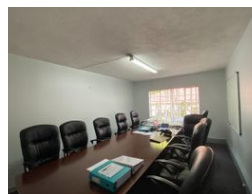
Contact Nelspruit

013 7526995

11 Murray Street
Nelspruit
1200



Web Ref 5004782



R1,500,025

Monthly Levy R2,000 Excl. VAT

Monthly Rates R2,000 Excl. VAT

0 0

Stylish upmarket office space

This is the executives dream.

This beautiful office is situated as central as it possible could be. In a quiet and stylish environment this office is surly going to compliment your business.

Upon entering you are met by a classy reception area, further this office is equipped with.

4 spacious and well lit offices great the perfect working space and environment.

There are bathrooms and a kitchen, a store room for archives and filing.

A well portioned boardroom makes your team and business meetings a pleasure.

Features

Zoning Commercial

Sizes

Floor Size 148m²
Land Size 2,856m²