

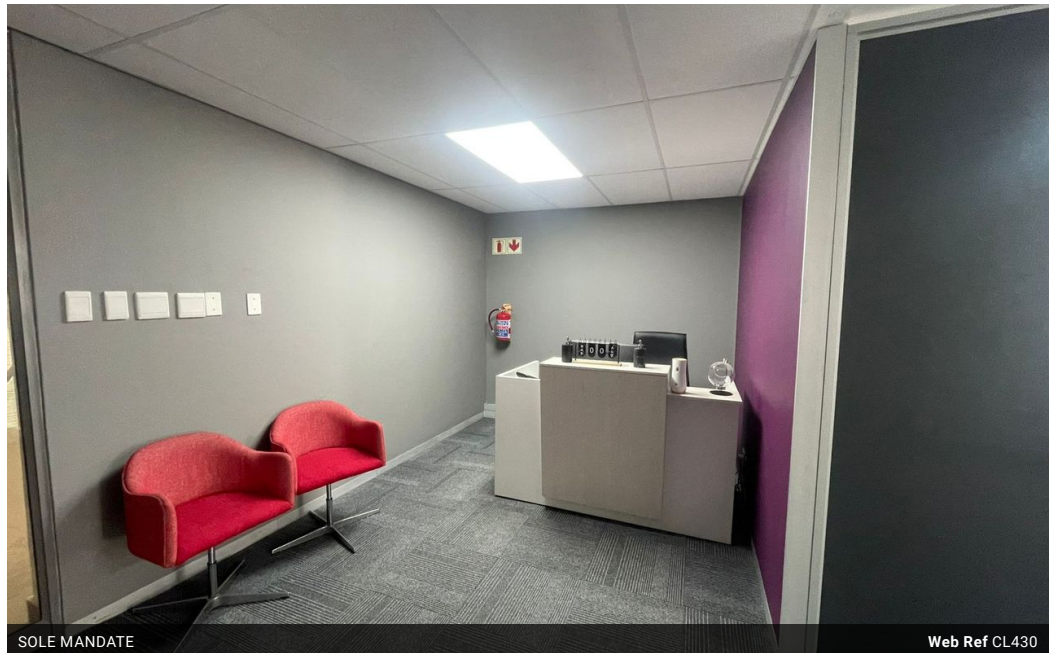


Schalk van Wyk
083 320 8084
schalk@threepercent.com

Contact Pretoria East

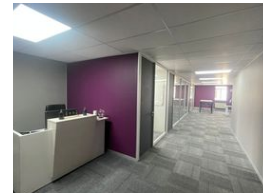
083 3208084

1st Floor, 59 Regency Drive, Route 21
Corporate Park, Irene, 0174



SOLE MANDATE

Web Ref CL430



R45,186 pm

Gross Monthly Rental R45,186 Excl. VAT

Monthly Rates R9,129.6 Excl. VAT

🏠 11 🚗 0

A Grade office available in Route 21 Corporate Park

Just Move In!

📍 A-Grade Office Space for Lease in Route 21 Corporate Park, Irene 📍

Are you looking for a professional, secure, and modern office space in a prestigious business park? Look no further!

We are delighted to present this recently renovated 288m² A-Grade office space, perfectly situated in Route 21 Corporate Park, Irene.

Key Features:

Open-Plan Design:

A versatile layout with open spaces to foster collaboration and productivity.

Reception Area:

Make a lasting impression on your clients and guests with a welcoming reception space.

Large Boardroom:

Features

Building Name
Zoning

Block B, 5 Regency Drive
Commercial

Interior

Air Conditioning

Yes

Power 3 Phase

Yes

Exterior

Security

Yes

Covered Parking Bays

7

Basement Parkings

4

Parking Ratio

1 bays / 41

m²

Sizes

Floor Size

288m²

Extras

24 Hour Access

