



Ayesha Kondkery
(Property Practitioner)
083 212 9502
ayesha@threepercent.com



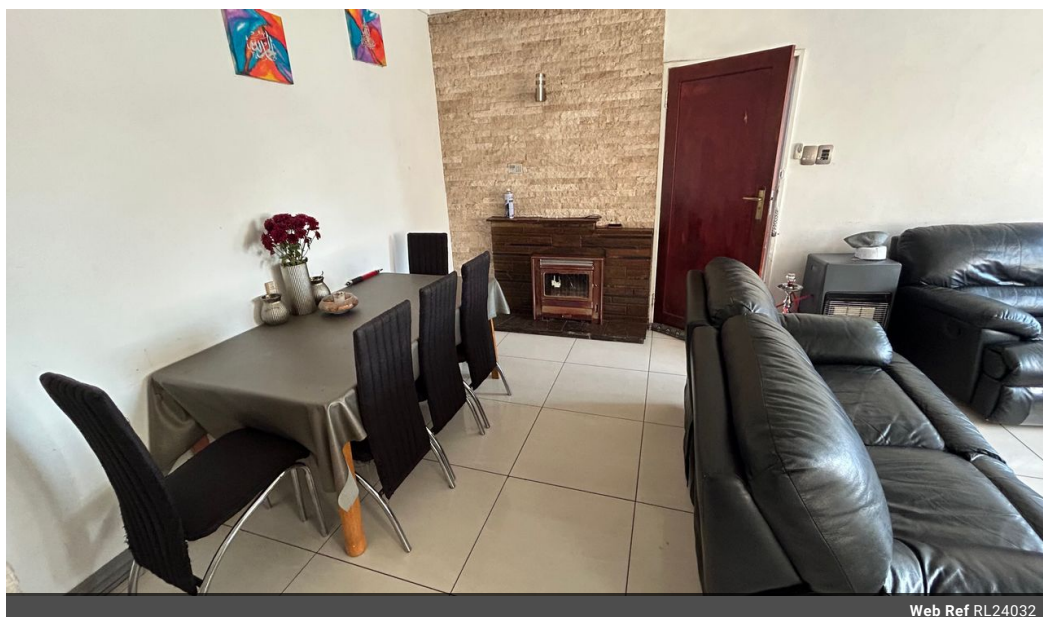
Christine Van Dyk
083 230 5777

christine@cvd-attorneys.com

Contact Jhb - Benoni

083 2305777

14 Polka Corner
Sunward Park
1459



Web Ref RL24032



R899,000

Monthly Bond Repayment R9,279.37
Calculated over 20 years at 11% with no deposit.

Transfer Costs R28,244.00 **Bond Costs** R21,450.00
These calculations are only a guide. Please ask your conveyancer for exact calculations.

Monthly Rates R505



Beautiful, spacious 4 Bedroom Family Home nestled in Actonville

Home sweet home! A home to create special family memories!

The home is close to schools as well as being close to the shopping centres and easy access to the highway.

There is a beautiful spacious open plan family room and open plan dining room.

The modern kitchen has beautiful kitchen counter tops, space for a fridge, plenty kitchen cupboards, undercounter oven, hob and extractor fan as well as space for a washing machine.

There are 4 neat bedrooms that are well sized and have built in cupboards.

There is 1 charming bathroom with separate toilet.

Garage.

Low maintenance home with maximum convenience.

Come and see! Call us now to arrange a viewing!

Features

Pets Allowed	Yes			
Interior		Exterior		Sizes
Bedrooms	4	Garages	1	Land Size
Bathrooms	1	Security	No	307m ²
Kitchens	1	Pool	No	
Recep. Rooms	2	Views	False	
Furnished	No			