



Ayesha Kondkery
(Property Practitioner)
083 212 9502
ayesha@threepercent.com



Christine Van Dyk
083 230 5777

christine@cvd-attorneys.com

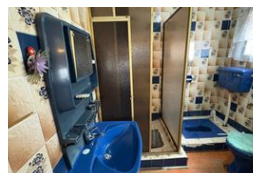
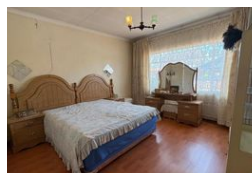
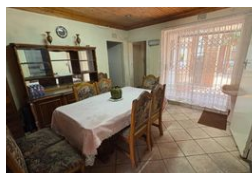
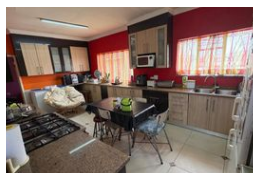
Contact Jhb - Benoni

083 2305777

14 Polka Corner
Sunward Park
1459



Web Ref RL25282



R1,100,000

7 4 1

Monthly Bond Repayment R11,354.07
Calculated over 20 years at 11% with no deposit.

Transfer Costs R32,749.00 **Bond Costs** R25,220.00
These calculations are only a guide. Please ask your conveyancer for exact calculations.

Monthly Rates R855

Proudly maintained, Spacious 7 Bedroom Family Home nestled in Actonville. A must see!

Here is the perfect recipe for a happy family! Special Family Home made to perfection!

This home is perfectly designed as one home or alternatively to divide into three separate homes if you want to earn a rental income.

Spacious 7 Bedroom Family Home and 4 bathrooms. So much to offer and more! So much potential!

Perfect to raise your family and call your home!

This charming home is perfectly and ideally positioned in Actonville, close to schools, hospital, shopping centres and has easy access to the highway.

You can divide the home into three sections-

The first section consists of an entrance hall, spacious family room leading through to a dining room. There is a neat kitchen with granite tops and plenty kitchen cupboard space. There are two charming bedrooms with an en-suite bathroom and guest toilet.

The second...

Features

Pets Allowed		Yes			
Interior		Exterior		Sizes	
Bedrooms	7	Garages	1	Land Size	446m ²
Bathrooms	4	Carports / Parkings	2		
Kitchens	3	Security	No		
Recep. Rooms	6	Pool	No		
Studies	1	Views	False		
Furnished	No				