



**Verdi Van Rensburg**  
(Property Practitioner)  
081 318 4388  
verdi@threepercent.com



**Christine Van Dyk**  
083 230 5777

christine@cvd-attorneys.com

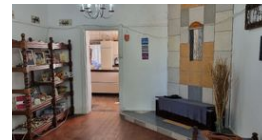
Contact Jhb - Benoni

083 2305777

14 Polka Corner  
Sunward Park  
1459



Web Ref RL23582



**R1,290,000**

3 2

**Monthly Bond Repayment** R13,315.23  
Calculated over 20 years at 11% with no deposit.

**Transfer Costs** R37,317.00 **Bond Costs** R27,105.00

These calculations are only a guide. Please ask your conveyancer for exact calculations.

**Monthly Rates** R1,020

Great investment opportunity! Two for the price of one! Ideally positioned in the heart of Benoni.

Location! Location! Location!

Prime position in Benoni Central, perfectly positioned to hospital, schools, shopping centres and has easy access to the highways.

Self-contained income producing flatlets. A property just ready to give your monetary returns.

The main house has a charming lounge, kitchen, two well sized bedrooms with a bathroom.

The one flatlet has 1 bedroom, bathroom, kitchen and a neat lounge.

The other flatlets have one large room with a bathroom.

One carport

Come and see!

## Features

**Pets Allowed** Yes

### Interior

Bedrooms	3
Bathrooms	2
Kitchens	2
Recep. Rooms	2
Furnished	No

### Exterior

Carports / Parkings	1
Security	No
Pool	No
Views	False

### Sizes

Land Size	991m <sup>2</sup>
-----------	-------------------