



**Margaret Mare (Property Practitioner)**  
084 821 1311  
margaret@threepercent.com



**Kim Jury (Property Practitioner)**  
083 442 4771  
kimjury@gmail.com

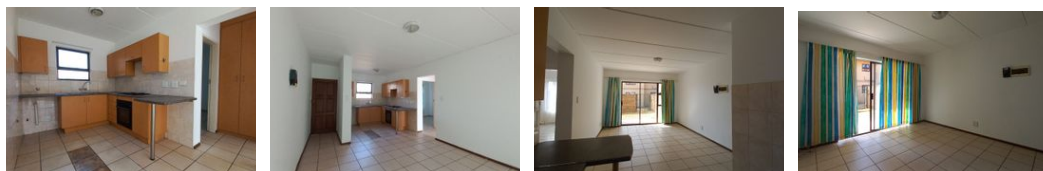
Contact Jhb - Boksburg, Springs and Brakpan

083 4424771

4 Lomond Avenue  
Lakefield  
Benoni  
1500



Web Ref RL24232



**R610,000**

🛏️ 2 🚿 1

**Monthly Bond Repayment** R6,296.35  
Calculated over 20 years at 11% with no deposit.

**Transfer Costs** R23,730.00    **Bond Costs** R17,680.00  
These calculations are only a guide. Please ask your conveyancer for exact calculations.

**Monthly Levy** R2,009    **Monthly Rates** R441

.Parkrand - Parklands Estate -Charming Ground Floor Unit -.R610 000.00neg

For Sale: Charming Ground Floor 2-Bedroom Unit

Step into this inviting 2-bedroom ground floor unit, featuring stylish tiling throughout. The open plan living area begins with a modern, well-designed kitchen, complete with a breakfast nook and ample space for all your appliances. This seamlessly flows into a spacious and sunny lounge and dining area, perfect for relaxing or entertaining.

Enjoy the outdoors with a covered patio and a private garden, ideal for leisurely afternoons. Security is top-notch with a perimeter wall, and the property is situated within a well-maintained estate.

Residents of this complex benefit from access to excellent communal amenities, including a refreshing pool at the clubhouse. The clubhouse also offers daily meal options and there is a tennis court for your enjoyment.

This unit combines...

**Features**

<b>Pets Allowed</b>	Yes			
<b>Interior</b>		<b>Exterior</b>	<b>Sizes</b>	
Bedrooms	2	Carports / Parkings	1	Floor Size 62m <sup>2</sup>
Bathrooms	1	Security	Yes	Land Size 23,931m <sup>2</sup>
Kitchens	1	Pool	Yes	
Recep. Rooms	2	Views	False	
Furnished	No			

**Extras**

Electric Fencing TV Port Curtain Rails Built in Wardrobes Bath, Toilet and Basin Hob Washing Machine Connection Under Counter Oven Breakfast Nook

