



Margaret Mare (Property Practitioner)
084 821 1311
margaret@threepercent.com



Kim Jury (Property Practitioner)
083 442 4771
kimjury@gmail.com

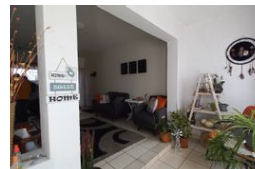
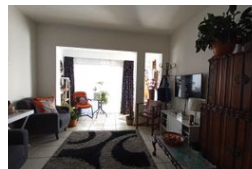
Contact Jhb - Boksburg, Springs and Brakpan

083 4424771

4 Lomond Avenue
Lakefield
Benoni
1500



Web Ref RL24268



R625,000

🛏️ 2 🚿 2

Monthly Bond Repayment R6,451.18
Calculated over 20 years at 11% with no deposit.

Transfer Costs R23,730.00 **Bond Costs** R17,680.00
These calculations are only a guide. Please ask your conveyancer for exact calculations.

Monthly Levy R2,009 **Monthly Rates** R441

.Parkrand - A CHARMING GROUND FLOOR APARTMENT/GARDEN .R625 000.00neg

Welcome to this charming ground floor apartment! Nestled in a secure complex with gated access, boom control, and round-the-clock security, this unit offers both safety and convenience.

Upon entering, you'll find a spacious open-plan kitchen with a breakfast nook, ample room for a double-door fridge and freezer, and plenty of space for all your essential appliances. This well-designed kitchen flows seamlessly into a large, sunny lounge that opens up to a private garden—ideal for enjoying some peace and privacy or hosting gatherings. The apartment also features undercover parking, providing added convenience and protection for your vehicle.

An added bonus is the communal pool and tennis court area, perfect for relaxation and recreation. Plus, the on-site clubhouse offers ready-made meals for those days when you prefer not to...

Features

Interior		Exterior		Sizes	
Bedrooms	2	Carports / Parkings	1	Floor Size	61m ²
Bathrooms	2	Security	Yes		
Kitchens	1	Pool	Yes		
Recep. Rooms	2	Views	False		
Furnished	No				

Extras

Electric Fencing Security Gate TV Port Curtain Rails Built in Wardrobes Bath, Toilet and Basin
Blinds Hob Washing Machine Connection Under Counter Oven Breakfast Nook

