



Gerhard Van der Merwe
082 854 1920
gerhard@gjjvdmerweattorneys.com



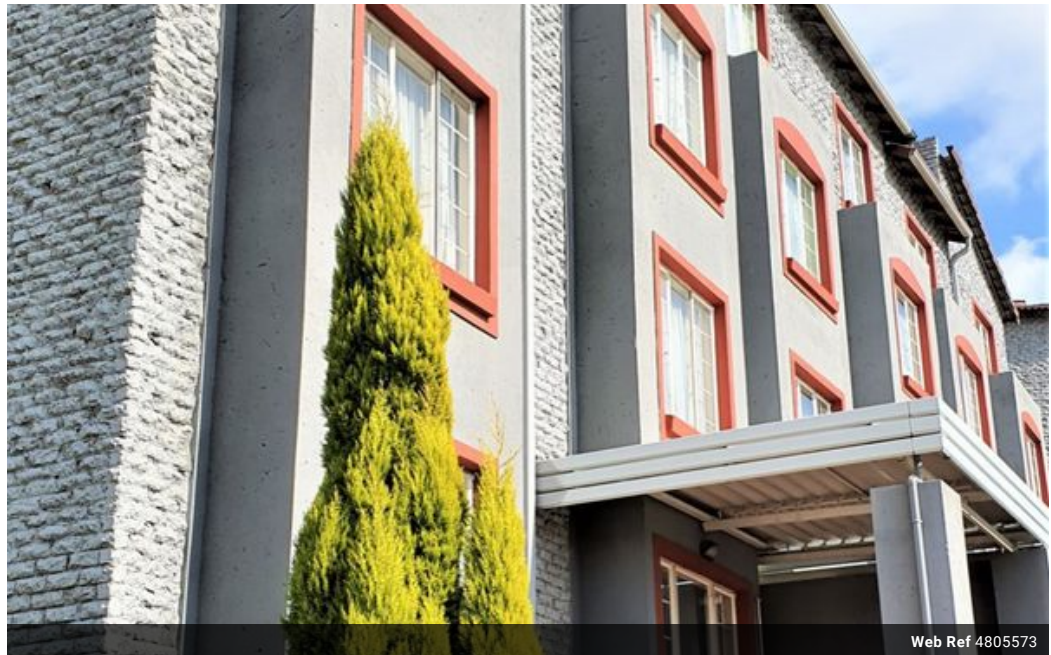
Basil van Jaarsveldt
082 990 3286

basil@gjjvdmerweattorneys.com

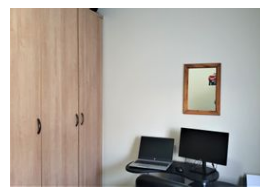
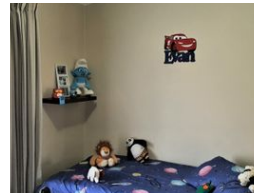
Contact Jhb - Bedfordview

011 6151482

1st Floor MCA House
Cambridge Place
Cnr Oxford and Kirkby Road
Bedfordview
2047



Web Ref 4805573



R520,000

🛏 2 🚿 1

Monthly Bond Repayment R5,367.38
Calculated over 20 years at 11% with no deposit.

Transfer Costs R21,217.00 **Bond Costs** R15,795.00

These calculations are only a guide. Please ask your conveyancer for exact calculations.

Monthly Levy R1,450 **Monthly Rates** R400

Lock up and go- for the young family

This lovely, well maintained two bedroom, one bathroom unit is situated close to shops and schools, with easy access to the N17 and N3 highways.

This popular complex has access control, 24 hour guarding service, pool, play area and club house.

The unit is fitted with a slam lock security gate and geyser timer, is fully tiled, save for the bedrooms, and features:

* two carpeted bedrooms with good quality built in cupboards

* a neatly tiled bathroom with aluminium blinds, a bath, basin toilet and shower,

* an open plan lounge and kitchen ,

* the kitchen being fitted with well made built in cupboards, an extractor fan above the hob, and under counter oven and fittings for a washing machine.

Contact us now for a viewing appointment

Features

Interior

Bedrooms	2
Bathrooms	1
Kitchens	1
Recep. Rooms	1
Furnished	No

Exterior

Carports / Parkings	1
Security	No
Pool	No
Views	False

Sizes

Floor Size	58m ²
Land Size	12,287m ²

