



Sarah-Beth Coetzee
074 211 8129
sarahbeth@threepercent.com

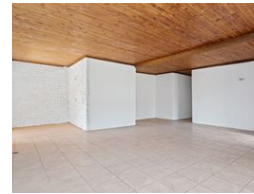
Contact Hartbeespoort

074 2118129

TBA



Web Ref RL22944



R2,850,000

4 2

Monthly Bond Repayment R29,417.37
Calculated over 20 years at 11% with no deposit.

Transfer Costs R148,055.00 **Bond Costs** R42,185.00
These calculations are only a guide. Please ask your conveyancer for exact calculations.

Farm

Welcome to this property located in the tranquil neighborhood of Rietfontein, Hartbeespoort. The plot offers a unique combination of comfortable living, ample space, and agricultural potential. The main feature of this property is a spacious 4-bedroom house, designed with functionality in mind. As you enter, you are greeted by a cozy living area leading into a well-appointed kitchen, perfect for preparing delicious meals. The house also boasts two bathrooms, ensuring convenience for the entire family.

Entertainment and relaxation are taken care of with a refreshing pool, ideal for cooling down during the hot summer months. The garden is perfect for a passionate gardener. For added convenience, there is a carport that provides parking space for four vehicles.

The property also has a separate two-bedroom, one-bathroom...

Features

Pets Allowed Yes

Interior
Bedrooms 4
Bathrooms 2
Kitchens 1
Recep. Rooms 3
Furnished No

Exterior
Carports / Parkings 6
Security No
Dom. Accom. 2
Pool Yes
Views True

Sizes
Land Size 3Ha