



Sarah-Beth Coetzee
074 211 8129
sarahbeth@threepercent.com



Semone Coetzee
083 975 5639

semone@threepercent.com

Contact **Hartbeespoort**

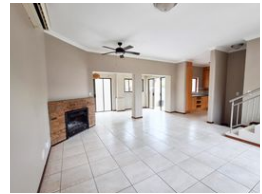
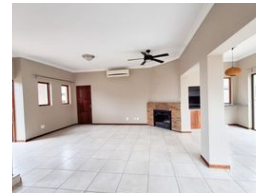
074 2118129

TBA

FEATURED



Web Ref RL25013



R2,180,000

🛏️ 3 🚿 2.5 🏠 2

Monthly Bond Repayment R22,501.71
Calculated over 20 years at 11% with no deposit.

Transfer Costs R88,747.00 **Bond Costs** R34,625.00

These calculations are only a guide. Please ask your conveyancer for exact calculations.

Monthly Levy R3,600 **Monthly Rates** R1,270

3 Bedroom House

Charming Ptopertu situated in Xanadu Eco Estate – Ideal for Lock-Up-and-Go or Cozy Family Living

Nestled in the serene heart of Hartbeespoort's most sought-after holiday town, this delightful home offers the perfect blend of comfort, security, and natural beauty. Whether you're a young family starting, merely in search of an excellent onvestment oppertunity or retired couple seeking tranquility, this home is an inviting retreat for all.

3 Bedrooms are located upstairs, main bedroom being on-suite, with two bedrooms sharing a full bathroom. Downstairs you will be greeted with an openplan living style layout with direct access to outside patio and garden.

Designed for easy living, the house boasts a bright and airy open-plan layout with spacious living areas that flow seamlessly into a private outdoor garden – perfect for...

Features

Pets Allowed Yes

Interior
Bedrooms 3
Bathrooms 2.5
Kitchens 1
Recep. Rooms 2
Furnished No

Exterior
Garages 2
Carports / Parkings 2
Security Yes
Pool No
Views True

Sizes
Floor Size 245m²
Land Size 400m²