



**Karla Strydom**  
083 450 5576  
karla.strydom@threepercent.com



**Melissa Strydom**  
083 321 2196

melissa.strydom@threepercent.com

Contact Jhb - Senderwood,  
Observatory, Linksfield &  
Cyrildene

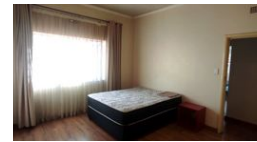
011 6225719

29 Whittaker's Way  
Bedfordview  
2007



SOLE MANDATE

Web Ref 4782299



**R1,800,000**

4 2.5

**Monthly Bond Repayment** R18,579.39

Calculated over 20 years at 11% with no deposit.

**Transfer Costs** R61,039.00 **Bond Costs** R30,875.00

These calculations are only a guide. Please ask your conveyancer for exact calculations.

### The right location with loads of potential

This income generating property is ideally located and have loads of potential. Entering through the back door you are greeted by a large kitchen with ample built in cupboards. The kitchen overlooks the dining room which allows for all inclusive dinner parties. A well sized lounge is situated off of the dining room. The home has two sun rooms which can be used as studies or additional bedrooms. Four large sun drenched bedrooms all with built in cupboards. The first bathroom has both a shower and a bath and the second bathroom includes a shower. An additional single bathroom ensure for extra convenience.

The home is situated on a large stand and includes numerous outbuildings which can be converted into income generating cottages. A large warehouse as well as 8 small rooms are some of the additional benefits one gets to enjoy...

### Features

#### Interior

Bedrooms	4
Bathrooms	2.5
Kitchens	1
Recep. Rooms	3
Furnished	No

#### Exterior

Carports / Parkings	1
Security	Yes
Pool	No
Views	False

#### Sizes

Land Size	1,732m <sup>2</sup>
-----------	---------------------