



**Shinique Steyn**  
072 374 0405  
shiniquenolte@yahoo.com

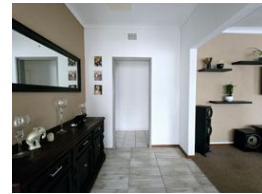
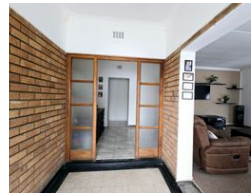
Contact Klerksdorp - Botha &  
Botha Attorneys Inc.

018 4682707

59 Monica Avenue  
Flamwood  
Klerksdorp  
2571



Web Ref RL24630



**R1,450,000**

7 6 1

**Monthly Bond Repayment** R14,966.73

Calculated over 20 years at 11% with no deposit.

**Transfer Costs** R44,285.00 **Bond Costs** R28,990.00

These calculations are only a guide. Please ask your conveyancer for exact calculations.

Spacious House with a lot to offer!!!

Potential Galore!!! From Big Families to someone looking for work space or for the INVESTOR!!!

Main House:  
3 Bedrooms  
2 Bathrooms  
2 Spacious living areas  
Kitchen with scullery  
Prepaid electricity  
Double carport  
Garage  
Lapa with braai area  
Swimming pool  
Lapa 2/entertainment area.  
This can be converted into anything. It also contains  
a guest room and x2 bathrooms  
Camera's  
Flat 1: (In Yard)  
Bachelor Office Studio

**Features**

**Pets Allowed** Yes

<b>Interior</b>	
Bedrooms	7
Bathrooms	6
Kitchens	2
Recep. Rooms	5
Studies	1
Furnished	No

<b>Exterior</b>	
Garages	1
Carports / Parkings	3
Security	Yes
Dom. Accom.	1
Pool	Yes
Views	False

<b>Sizes</b>	
Floor Size	270m <sup>2</sup>
Land Size	1,581m <sup>2</sup>