



Forster Attorneys -
Annabelle Forster Els
082 061 8460
annabelle@threepercent.com

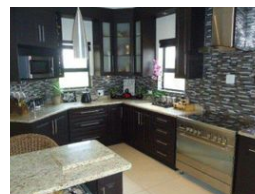
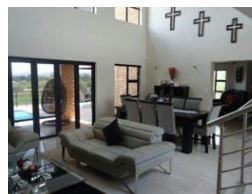
Contact Parys & surrounds

082 9044728

2904 Ibis Close
Pary's Golf Estate



Web Ref RL17400



R6,145,000

Monthly Bond Repayment R63,427.98
Calculated over 20 years at 11% with no deposit.

Transfer Costs R539,716.00 **Bond Costs** R70,535.00
These calculations are only a guide. Please ask your conveyancer for exact calculations.

🛏 4 🚿 3 🚗 4

A showpiece impressive in design and flawless in execution.

This house is the epitome of luxury living.

- It consists of the following:
- 4 Bedrooms, main-en-suite with its own kitchenette.
- 3 Bathrooms
- Openplan lounge, diningroom that opens up to the balcony with pool.
- Openplan kitchen with its own lounge that opens up to a built in braai.
- Gym
- Cinema
- Views over the golf course, Hills and the town of Parys.

Owning a house of this calibre is a profound statement of your achievements. Call us today to be the proud owner to give out this address to friends and family.

Features

Interior		Exterior		Sizes	
Bedrooms	4	Garages	4	Land Size	742m ²
Bathrooms	3	Security	No		
Kitchens	1	Pool	Yes		
Recep. Rooms	2	Views	False		
Studies	1				
Furnished	No				

