

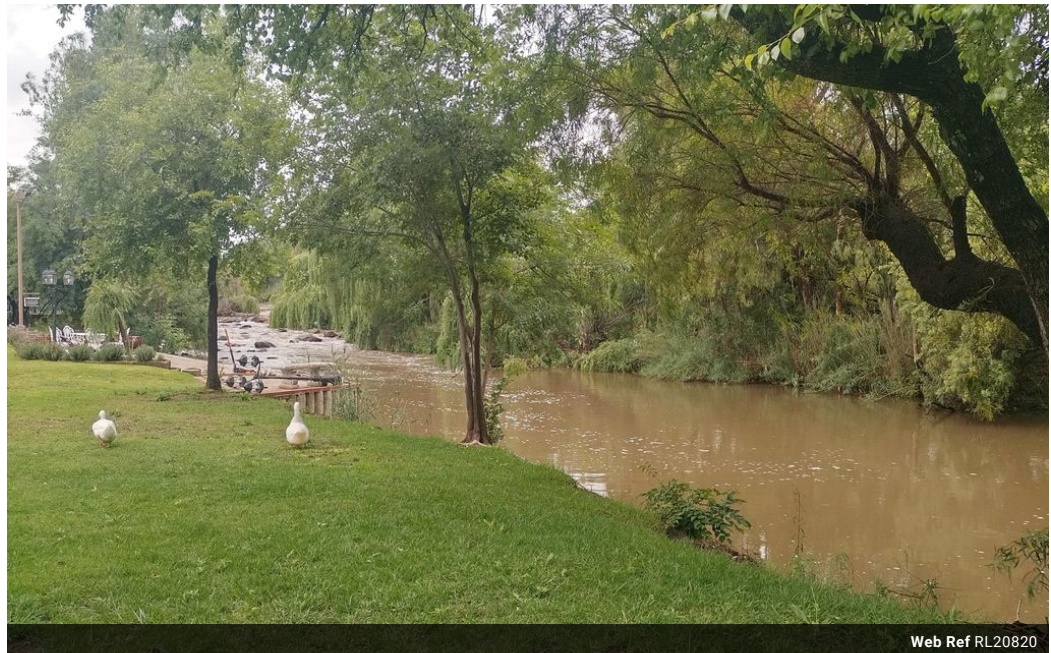


Forster Attorneys -
Annabelle Forster Els
082 061 8460
annabelle@threepercent.com

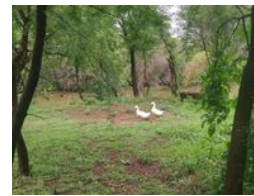
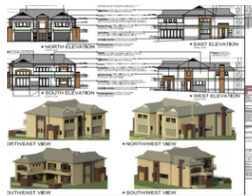
Contact Parys & surrounds

082 9044728

2904 Ibis Close
Pary's Golf Estate



Web Ref RL20820



R899,000

Monthly Bond Repayment R9,279.37

Calculated over 20 years at 11% with no deposit.

Transfer Costs R28,244.00 **Bond Costs** R21,450.00

These calculations are only a guide. Please ask your conveyancer for exact calculations.

Monthly Levy R2,550

747sq river front stand for sale.

There are only two known stands on this part of the river that is currently for sale. They are sought after and sold as soon as it hits the market

It consists of the following:

- *Approved plans
- *747sq
- *Boundary wall on one side
- *River frontage
- *Lots of "free" property in front of house that you can utilise for a bigger lawn area.

It is without a doubt the most popular area on the estate.

Call today for a viewing.

Features