

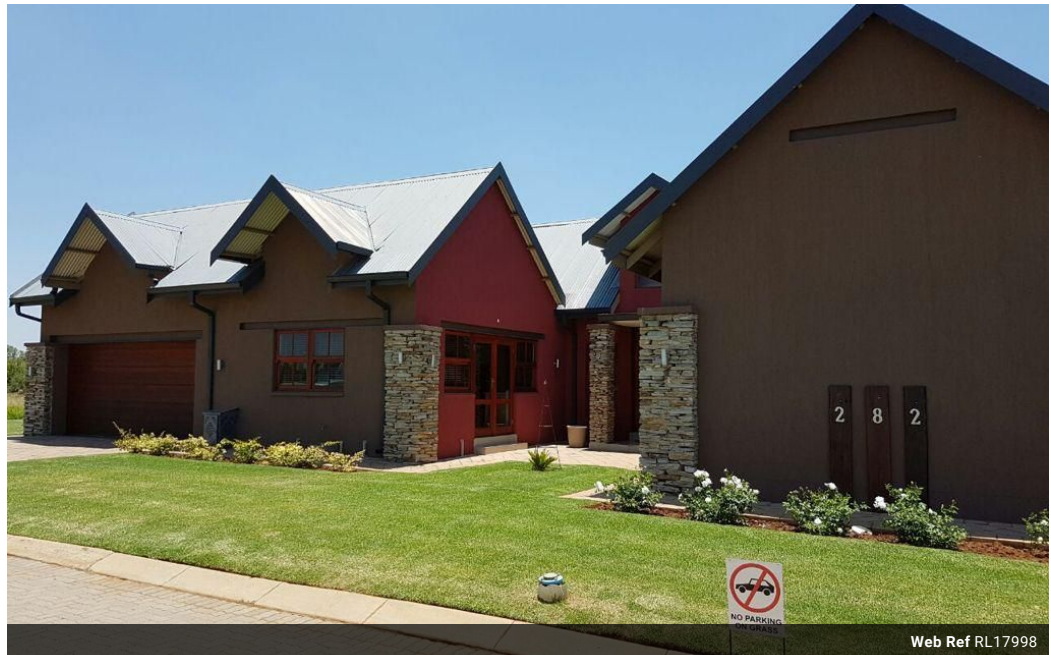


Forster Attorneys -
Annabelle Forster Els
082 061 8460
annabelle@threepercent.com

Contact Parys & surrounds

082 9044728

2904 Ibis Close
Pary's Golf Estate



Web Ref RL17998



R3,100,000



Monthly Bond Repayment R31,997.84
Calculated over 20 years at 11% with no deposit.

Transfer Costs R173,379.00 **Bond Costs** R44,070.00
These calculations are only a guide. Please ask your conveyancer for exact calculations.

Monthly Levy R2,200

NORTH FACING BEAUTY.

What is not to like about this property, it is situated in a quiet cul-de-sac overlooking the 11th fairway.

It consists of 3 bedrooms, 2 bathrooms and openplan living areas.

Call today for a viewing.

Features

Interior		Exterior		Sizes	
Bedrooms	3	Garages	2	Land Size	700m ²
Bathrooms	2	Security	No		
Recep. Rooms	2	Pool	No		
Furnished	No	Views	False		

