



Forster Attorneys -
Martie Keulder
072 332 8061
martie@threepercent.com

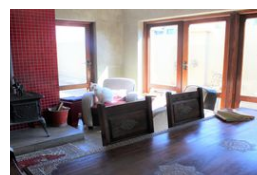
Contact Parys & surrounds

082 9044728

2904 Ibis Close
Pary's Golf Estate



Web Ref RL19450



R3,120,000

4 4 2

Monthly Bond Repayment R32,204.28
Calculated over 20 years at 11% with no deposit.

Transfer Costs R175,579.00 **Bond Costs** R44,070.00
These calculations are only a guide. Please ask your conveyancer for exact calculations.

Monthly Levy R2,500 **Monthly Rates** R1,500

Words won't do this beautiful, elegant design, modern up market family home justice

Open the front door and the spacious entrance hall
Walk through the front door of his stylish home and experience extra double volume design engulf you in light and a feeling of space in the modern, large open plan setting which includes dining and living areas.

Four spacious Bedrooms and four en suite bathrooms. All Bathrooms are tiled and tastefully decorated with colour, textures and fittings.

Open planned to the exquisite Kitchen is a lounge and dining area boasting with a fireplace.

Open plan Kitchen boosts cupboards, eye level oven, hob, extractor fan, breakfast counter and tiled floors.

Leading from the open plan living area that opens up to the massive patio with built in braai for barbecue provide perfect balance between indoor and outdoor living areas.
Garden is perfectly manicured, with a sparkling blue...

Features

Interior		Exterior		Sizes	
Bedrooms	4	Garages	2	Land Size	859m ²
Bathrooms	4	Security	Yes		
Kitchens	1	Pool	Yes		
Recep. Rooms	2	Views	False		
Furnished	No				

Extras

24 Hour Response Air Conditioner Alarm System Balcony Boomed Area Built In Braai Built in Wardrobes Country Style Dishwasher Connection Electric Garage Entrance Hall Eye Level Oven Extractor Fan Fibre Garden Granite Tops Guest Toilet Linen Room Open Plan Special Doors TV Port Tiled Floors Under Counter Oven Walk In Closet Water Tanks