



**Anelle van Staden**  
 082 553 2767  
 anelle@threepercent.com



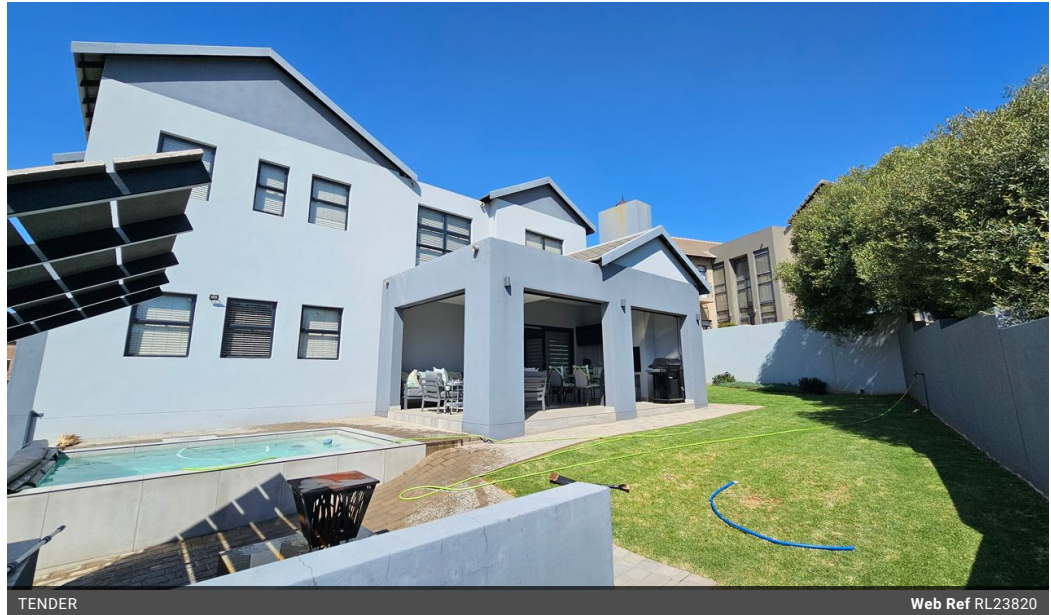
**Schalk van Wyk**  
 083 320 8084

schalk@threepercent.com

Contact Pretoria East

083 3208084

1st Floor, 59 Regency Drive, Route 21  
 Corporate Park, Irene, 0174



TENDER

Web Ref RL23820



## TENDER

Monthly Levy R1,645 Monthly Rates R2,244

🛏️ 4 🚿 3 🏠 3

### 4 Bedroom, Study and Triple Garage

Welcome to this stunning new listing!

Nestled in the serene surroundings of Country View Estate, Mooikloof, this immaculate home offers the perfect blend of comfort and tranquility. With 24-hour security, you can rest assured knowing your family is safe and sound.

Step inside this modern abode with aluminum doors and windows inviting natural light to the living space where you will be greeted by a sense of quality and elegance. The spacious living area with separate office space by the front door, makes working from home convenient.

Large windows, creates a warm and inviting atmosphere for gatherings with loved ones. Adjacent to the living area with air-conditioner and sliding door to the expansive garden and under cover patio, you'll find a well-appointed kitchen boasting ample cupboard space, Caesar-stone countertops,...

### Features

**Pets Allowed** Yes

#### Interior

Bedrooms	4
Bathrooms	3
Kitchens	1
Recep. Rooms	2
Studies	1
Furnished	No

#### Exterior

Garages	3
Carports / Parkings	4
Security	Yes
Pool	Yes
Views	True

#### Sizes

Floor Size	520m <sup>2</sup>
Land Size	813m <sup>2</sup>

#### Extras

Air Conditioner Built In Braai Built in Wardrobes Covered Patio Double Storey Electric Garage Estate Freestanding Gas Hob Immaculate Condition Scullery Sliding Doors Splash Pool Solar Geyser Storeroom Washing Machine Connection Dishwasher Connection North Ultra Modern Aluminium Window