



Clarel van Vuuren
082 652 8123
clarelv@threepercent.com



Schalk van Wyk
083 320 8084

schalk@threepercent.com

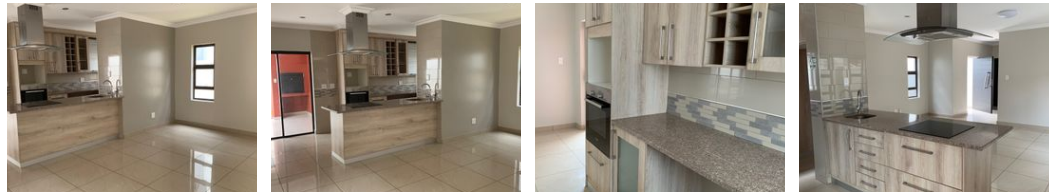
Contact Pretoria East

083 3208084

1st Floor, 59 Regency Drive, Route 21
Corporate Park, Irene, 0174



Web Ref RL25277



R2,295,000

🛏️ 3 🚿 2.5 🏠 2

Monthly Bond Repayment R23,688.72
Calculated over 20 years at 11% with no deposit.

Transfer Costs R97,838.00 **Bond Costs** R36,530.00

These calculations are only a guide. Please ask your conveyancer for exact calculations.

Monthly Levy R1,125 **Monthly Rates** R1,800

Beautiful, Modern and ready to move in!!

Experience luxurious estate living at its finest with this beautifully designed 3-bedroom double-storey home, situated in a sought-after Olympus Estate. Boasting sophisticated finishes, spacious interiors, and seamless indoor-outdoor living, this property is the perfect blend of comfort and functionality for modern family life.

As you enter, you're welcomed by a spacious open-plan dining / living area, creating an elegant yet cozy atmosphere for family gatherings or entertaining guests. The entire property is tastefully tiled, adding a refined touch throughout.

A Kitchen Designed for Culinary Delight

The heart of the home is the well-appointed kitchen, featuring a beautiful countertop stove, electric oven, extractor fan, and ample wraparound cupboard space. Whether you're preparing a simple family dinner or hosting a gourmet...

Features

Pets Allowed Yes

Interior

Bedrooms	3
Bathrooms	2.5
Kitchens	1
Recep. Rooms	2
Studies	1
Furnished	No

Exterior

Garages	2
Carports / Parkings	2
Security	Yes
Pool	Yes
Views	False

Sizes

Floor Size	207m ²
------------	-------------------

