



Tiaan Van Dyk
 082 825 8876
 tiaan.vandyk@threepercent.com

Contact Pretoria, Lynnwood,
 Meyerspark & Surrounds

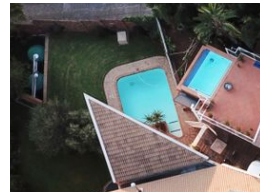
082 8258876

Kings Highway 406
 Lynnwood
 0081



SOLE MANDATE

Web Ref RL19479



R4,350,000

Monthly Levy R650

Monthly Rates R1,750

🛏️ 6 🚿 3.5 🚗 2

Dream property in Lynnwood Gardens with scenic view with all the added extras!

Dream property in Lynnwood Gardens with scenic view with all the added extras!

SOLE MANDATE

This beautiful home is located right next to Strubenkop Reservation with wonderful birdlife!
 Please view the video of this property.
 Old world charm with parquet floors.

Downstairs you will find:
 Spacious lounge with surrounding windows that lead to the terraced garden.
 Study with built in cupboards and desk top.
 Guest Toilet
 Direct access from the double garage
 Workshop
 Flatlet with lounge, kitchenette, full bathroom and bedroom.

Upstairs you will find:
 Spacious Open plan living area with fireplace and fitted with aircon

Features

Pets Allowed Yes

Interior

| | |
|--------------|-----|
| Bedrooms | 6 |
| Bathrooms | 3.5 |
| Kitchens | 1 |
| Recep. Rooms | 3 |
| Studies | 1 |
| Furnished | No |

Exterior

| | |
|---------------------|------|
| Garages | 2 |
| Carports / Parkings | 1 |
| Security | Yes |
| Dom. Accom. | 1 |
| Pool | Yes |
| Views | True |

Sizes

| | |
|------------|---------------------|
| Floor Size | 500m ² |
| Land Size | 1,165m ² |

Extras

24 Hour Access Air Conditioner Balcony Boomed Area Borehole Breakfast Nook Built In Bar
 Built in Wardrobes Curtain Rails Deck Dishwasher Connection Driveway Electric Garage Fibre
 Fridge Fireplace Guard Garden Granite Tops Irrigation System Open Plan Parquet Floors Patio
 Paveway Solar Geyser Sliding Doors Special Lights TV Port Tiled Floors Under Counter Oven
 Washing Machine Connection Water Tanks Double Storey Gated Community Open Plan
 Kitchen Modern Visitors Parking Staff Quarters Domestic Rooms Staircase Loft Garden
 Terrace

