



Nicolene Bierman
082 892 0724
nicolene@threepercent.com



Schalk van Wyk
083 320 8084

schalk@threepercent.com

Contact Pretoria East

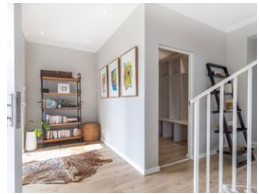
083 3208084

1st Floor, 59 Regency Drive, Route 21
Corporate Park, Irene, 0174



SOLE MANDATE

Web Ref RL25166



R5,100,000

4 3.5 2

Monthly Bond Repayment R52,641.61
Calculated over 20 years at 11% with no deposit.

Transfer Costs R418,807.00 **Bond Costs** R65,785.00
These calculations are only a guide. Please ask your conveyancer for exact calculations.

Monthly Levy R1,840 **Monthly Rates** R2,795.8

Magnificent 4-Bedroom Home on Greenbelt in the Sought-After Hills Estate

Sole Mandate

Experience the perfect blend of light, space, and elegance in this move-in-ready home located in the prestigious Hills Estate.

Upon entering, you'll be welcomed by an open-plan living area that offers stunning views of the greenbelt from every room. Aluminium stacking doors from both the dining and living areas open up to a spacious patio, perfect for entertaining friends and family, while children can enjoy the expansive garden and sparkling pool.

Living Area:

The living room boasts double-volume ceilings, allowing an abundance of natural light to flood the space. Featuring a cozy fireplace, it's the perfect setting for family movie nights.

Kitchen:

This stylish kitchen, with its gleaming white finishes and silver accents, is both visually appealing and highly functional. It includes a rinse basin, extractor...

Features

Pets Allowed Yes

Interior

Bedrooms	4
Bathrooms	3.5
Kitchens	1
Recep. Rooms	2
Studies	1
Furnished	No

Exterior

Garages	2
Carports / Parkings	2
Security	Yes
Dom. Accom.	1
Pool	Yes
Views	True

Sizes

Floor Size	365m ²
Land Size	1,039m ²

