



Clarel van Vuuren
082 652 8123
clarelv@threepercent.com



Schalk van Wyk
083 320 8084

schalk@threepercent.com

Contact Pretoria East

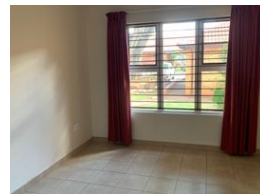
083 3208084

1st Floor, 59 Regency Drive, Route 21
Corporate Park, Irene, 0174

2 Bedroom Retirement Unit For Sale in Willow Park Manor



Web Ref RL24888



R1,079,000

2 1

Monthly Bond Repayment R11,137.31
Calculated over 20 years at 11% with no deposit.

Transfer Costs R32,749.00 **Bond Costs** R25,220.00

These calculations are only a guide. Please ask your conveyancer for exact calculations.

Monthly Levy R1,850 **Monthly Rates** R850

Well priced, 2 Bedroom retirement unit for sale

Nestled within a peaceful and well-maintained retirement village, this charming 2-bedroom unit offers the perfect blend of comfort and convenience for those looking to enjoy their golden years.

Step inside to find a spacious open-plan living area leading to a well appointed kitchen with ample built-in cupboards.

The two bedrooms feature built-in cupboards with large windows that invite the tranquility of the surrounding gardens indoors.

The bathroom is thoughtfully designed for easy accessibility, equipped with a walk-in shower and modern finishes.

This unit also includes a private patio, ideal for enjoying your morning coffee or relaxing with a good book.

Residents of this retirement village enjoy access to a range of amenities, including a communal clubhouse, frail-care facilities, beautifully landscaped gardens and...

Features

Interior

| | |
|--------------|----|
| Bedrooms | 2 |
| Bathrooms | 1 |
| Kitchens | 1 |
| Recep. Rooms | 2 |
| Furnished | No |

Exterior

| | |
|---------------------|-------|
| Carports / Parkings | 2 |
| Security | Yes |
| Pool | No |
| Views | False |

Sizes

| | |
|------------|------------------|
| Floor Size | 65m ² |
|------------|------------------|

