



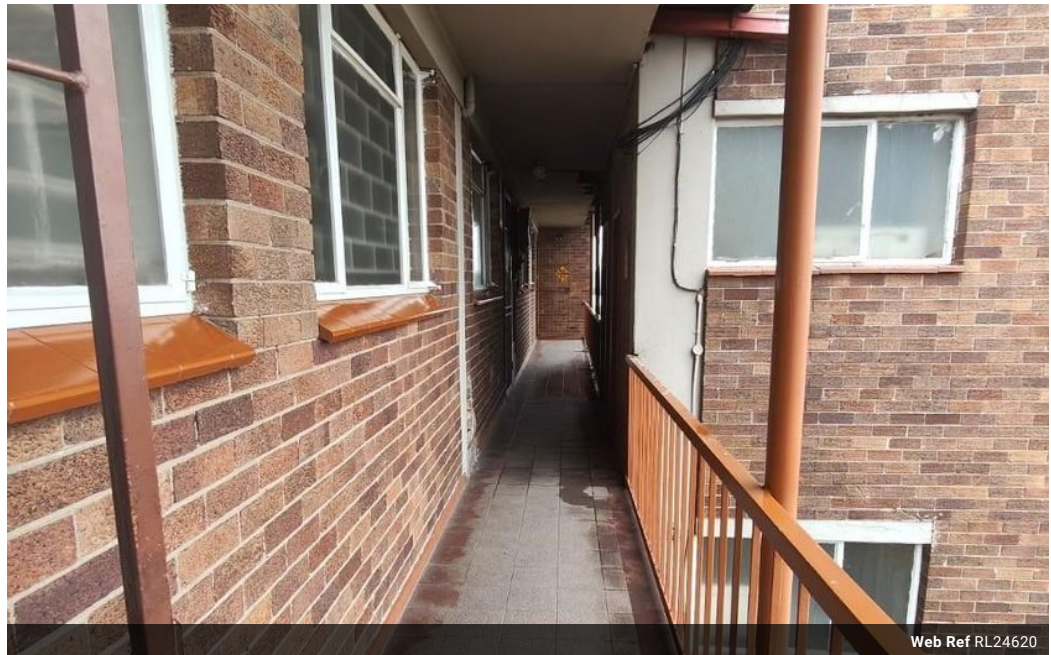
Zeldá Da Silva
 083 298 1299
 zelda@threepercent.com

Contact Parys & surrounds

082 9044728

2904 Ibis Close
 Pary's Golf Estate

2 Bedroom Apartment For Sale in Sasolburg Central



Web Ref RL24620



R380,000

2 1

Monthly Bond Repayment R3,922.32
 Calculated over 20 years at 11% with no deposit.

Transfer Costs R16,806.00 **Bond Costs** R11,960.00
 These calculations are only a guide. Please ask your conveyancer for exact calculations.

Monthly Levy R1,494 **Monthly Rates** R327 **Sectional Title Levy** R1
Special Levy R1

Cosy 2 Bedroom Flat in Sasolburg for sale

Discover the perfect starter home in this charming 2-bedroom apartment located on the 6th floor of a secure complex. Designed for contemporary living, this space features an open-plan dining room and lounge, creating a warm and inviting atmosphere for relaxation and entertaining.

The kitchen is equipped with a stove and ample cupboard space, ideal for meal preparation. Both bedrooms are well-sized, providing a comfortable retreat for you and your partner. The bathroom is conveniently located to serve both bedrooms.

Enjoy the ease of tiled floors throughout, making maintenance a breeze. This apartment also includes a close-up garage for one vehicle, ensuring your car is safely housed.

With its secure setting and modern amenities, this apartment is perfect for a young couple looking to establish their first home. Don't miss...

Features

Interior		Exterior		Sizes	
Bedrooms	2	Carports / Parkings	1	Floor Size	72m ²
Bathrooms	1	Security	Yes	Land Size	72m ²
Kitchens	1	Pool	No		
Recep. Rooms	2	Views	False		
Furnished	No				

