



Zelda Da Silva
083 298 1299
zelda@threepercent.com

Contact Parys & surrounds

082 9044728

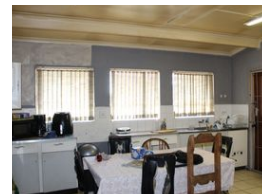
2904 Ibis Close
Parys Golf Estate

4 Bedroom House For Sale in Sasolburg Ext 23

NEW



Web Ref RL25490



R860,000

4 2 1

Monthly Bond Repayment R8,876.82

Calculated over 20 years at 11% with no deposit.

Transfer Costs R28,244.00 **Bond Costs** R21,450.00

These calculations are only a guide. Please ask your conveyancer for exact calculations.

Monthly Rates R900

Fixer-Upper 4-Bedroom House for Sale in Sasolburg Ext 33 – Great Potential!

This spacious 4-bedroom home in Sasolburg Ext 33 is full of potential and ready for someone with vision to make it shine again. Ideally located close to Coram Deo Family Church, it's situated in a safe, quiet, and friendly neighborhood.

The house features a large kitchen with ample cupboard space, a comfortable lounge, and a separate dining room, offering plenty of room for family living. There are two bathrooms – one with a shower and one with a bathtub – catering to the needs of a busy household.

Outside, you'll find a big yard perfect for kids, pets, or future landscaping projects. There's also a swimming pool and lapa, ideal for entertaining once refreshed. The face brick exterior and zinc roof give the home a solid structure, and palisade fencing in the front adds an extra layer of security.

Additional features...

Features

| Pets Allowed | | Yes | |
|--------------|---------------------|---------------------|-------|
| Interior | | Exterior | |
| Bedrooms | 4 | Garages | 1 |
| Bathrooms | 2 | Carports / Parkings | 2 |
| Kitchens | 1 | Security | No |
| Recep. Rooms | 2 | Pool | Yes |
| Furnished | No | Views | False |
| Sizes | | | |
| Floor Size | 850m ² | | |
| Land Size | 1,204m ² | | |

