



Zelda Da Silva
083 298 1299
zelda@threepercent.com

Contact Parys & surrounds

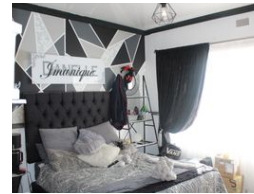
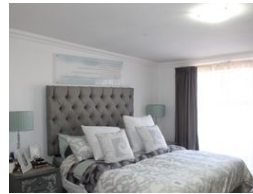
082 9044728

2904 Ibis Close
Parys Golf Estate

6 Bedroom House For Sale in Lamont Park



Web Ref RL24104



R999,000

Monthly Bond Repayment R10,311.56
Calculated over 20 years at 11% with no deposit.

Transfer Costs R30,412.00 **Bond Costs** R23,335.00

These calculations are only a guide. Please ask your conveyancer for exact calculations.

6 4 4

Monthly Levy R1 **Monthly Rates** R880 **Special Levy** R1

Prime Property in Lamont Park, Vanderbijlpark

Located in the desirable Lamont Park neighborhood, this expansive property offers two fully-equipped 3-bedroom houses on a spacious 2200 m2 plot, ideal for extended family living or rental income potential.

Main Features:

Two Houses: Each house boasts 3 bedrooms with built-in cupboards and carpeted floors, creating a cozy and inviting atmosphere.

Modern Bathrooms: Tastefully tiled bathrooms in both houses, featuring contemporary fittings and finishes.

Spacious Living Areas: Generously sized lounges and dining rooms with plush carpeting, perfect for family gatherings and entertaining guests.

Outdoor Entertainment: A large patio provides an ideal setting for relaxation and hosting get-togethers, overlooking the well-maintained garden.

Garages: Four garages, including one designed for extra-long vehicles, ensuring ample parking...

Features

Pets Allowed Yes

Interior

Bedrooms	6
Bathrooms	4
Kitchens	2
Recep. Rooms	4
Studies	2
Furnished	No

Exterior

Garages	4
Carports / Parkings	4
Security	Yes
Pool	No
Views	False

Sizes

Floor Size	1,600m ²
Land Size	2,200m ²

