



Forster Attorneys-
Annika Liebenberg
 082 771 0147
 annika@threepercent.com

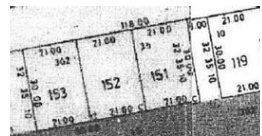
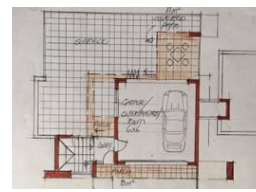
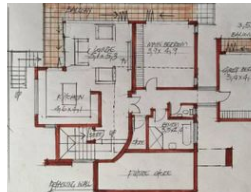
Contact Parys & surrounds

082 9044728

2904 Ibis Close
 Parys Golf Estate



Web Ref RL19583



R280,000

Monthly Bond Repayment R2,890.13

Calculated over 20 years at 11% with no deposit.

Transfer Costs R15,517.00 Bond Costs R10,985.00

These calculations are only a guide. Please ask your conveyancer for exact calculations.

Monthly Rates R616

Vaalower Stand For Sale With Plans

This stand is situated within an access controlled development called Vaalower.

It is located approximately 100km from the East Rand, 75km from the West Rand and 25km from the Vaal Mall, Vanderbijlpark.

- *It offers a 180 degree view of the Vaal river and neighboring game farm.
- * No levies.
- * There are no specific timeframe to complete building work.
- * Provisional plans has been prepared for client approval.

Call me for a viewing appointment.

Features

